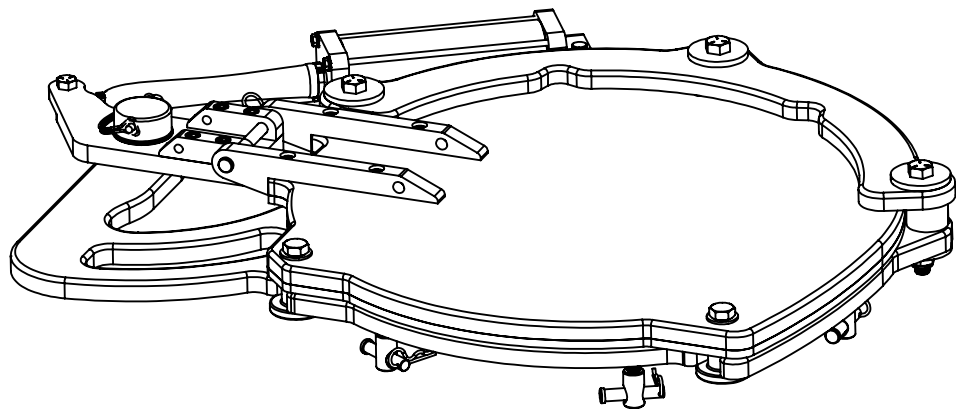
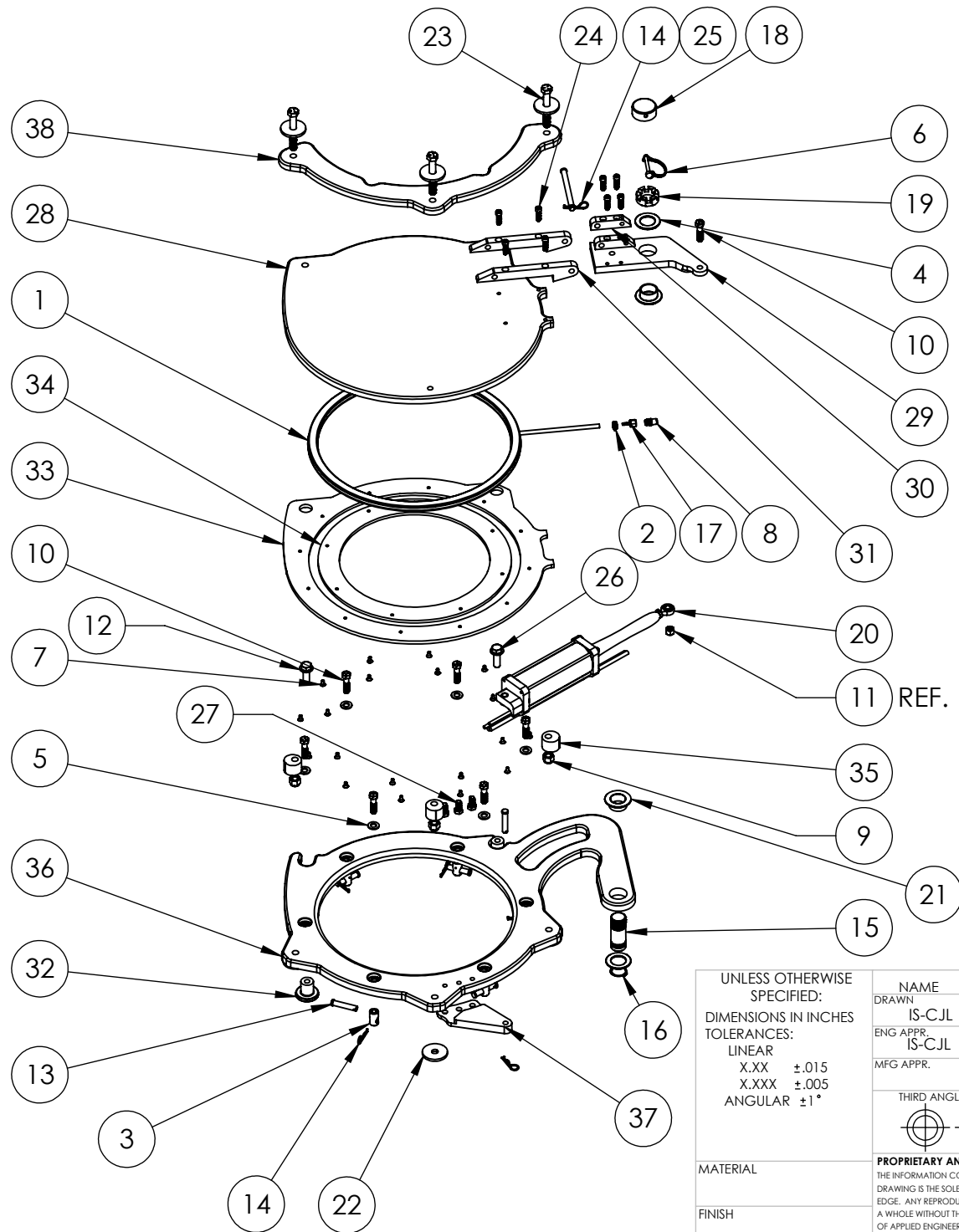


ITEM NO.	PART NUMBER	Rev	DESCRIPTION	QTY.	ITEM NO.	PART NUMBER	Rev	DESCRIPTION	QTY.
1	102419	B	SEAL, INFLATABLE	1	20	103986	C	3 X 6 COMPOSITE CYLINDER	1
2	102502	NA	HOSE CLAMP, INFLATION TUBE	1	21	104019	NA	BUSHING, NYLON HINGE PIN	2
3	102595	A	NUT, CLEVIS 1/2" DIA	6	22	104070	B	WASHER, 5/8 x 2.50 x 1/4	6
4	103678	NA	HINGE PIN THRUST WASHER	2	23	104072	NA	HEX BOLT, 5/8-11 x 4.5"	3
5	103688	NA	WASHER, FLAT 14MM	6	24	104075	NA	SHCS 3/8-16 x 1.25"	8
6	103691	NA	HINGE PIN D-RING	1	25	104106	NA	CLEVIS PIN, 6"	1
7	103735	NA	SCREW, CS 1/4-20 X 1/2	20	26	104108	NA	BOLT 5/8-11X2.0 GR5	2
8	103743	NA	1/4 NPT X 3/8 TUBE STRAIGHT	1	27	104109	NA	1/2-13 X 1.0 HEX BOLT	3
9	103826	NA	NUT, NYLOC 5/8-11	3	28	60002	IR-1	MACHINED COVER, 6 BOLT	1
10	103831	NA	1/2-20 X 2 HEX BOLT	7	29	60003	IR-1	PIVOT BRACKET	1
11	103859	NA	1/2-20 NYLOK NUT	1	30	60004	IR-1	PIVOT ATTACHMENT	2
12	103943	NA	5/8" SAE Galvanized Washer	2	31	60005	IR-2	COVER ATTACHMENT	2
13	103948	NA	CLEVIS PIN, 1/2 x 2-1/2	7	32	60010	C	COVER PULL STUD	2
14	103949	NA	HAIR PIN	8	33	60012	IR-1	SLIDER, OUTER	1
15	103950	A	HINGE PIN	1	34	60013	IR-1	SLIDER, INNER	1
16	103951	NA	RETAINING RING, 1.5"	1	35	60016	IR-1	LOCKBAR STANDOFF	3
17	103952	NA	HOSE BARB TO 1/4 NPT FEM.	1	36	60019	IR-2	MACHINED FLANGE, 6 BOLT	1
18	103968	NA	HINGE PIN CAP ROUND	1	37	60021	IR-2	CYLINDER MOUNT BRACKET	1
19	103969	B	CUSTOM CASTLE NUT	1	38	60022	IR-2	LOCK BAR	1



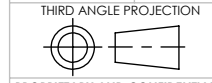
UNLESS OTHERWISE SPECIFIED: DIMENSIONS IN INCHES TOLERANCES: LINEAR X.XX ±.015 X.XXX ±.005 ANGULAR ±1°	NAME DRAWN IS-CJL DATE 8/31/17		
	ENG APPR. IS-CJL DATE 8/31/17		TITLE: Domestic Assembly, 6 Bolt
	MFG APPR.	THIRD ANGLE PROJECTION 	SIZE DWG. NO. REV A 60020 IR-3
	MATERIAL FINISH	PROPRIETARY AND CONFIDENTIAL <small>THE INFORMATION CONTAINED IN THIS DRAWING IS THE SOLE PROPERTY OF PIVOTAL EDGE. ANY REPRODUCTION IN PART OR AS A WHOLE WITHOUT THE WRITTEN PERMISSION OF PIVOTAL EDGE IS PROHIBITED.</small> 60020	MASS LB SHEET 1 OF 2



UNLESS OTHERWISE SPECIFIED:
 DIMENSIONS IN INCHES
 TOLERANCES:
 LINEAR
 X.XX ±.015
 X.XXX ±.005
 ANGULAR ±1°

MATERIAL
 FINISH

NAME	DATE
DRAWN IS-CJL	8/31/17
ENG APPR. IS-CJL	8/31/17
MFG APPR.	



THIRD ANGLE PROJECTION
PROPRIETARY AND CONFIDENTIAL
 THE INFORMATION CONTAINED IN THIS DRAWING IS THE SOLE PROPERTY OF PIVOTAL EDGE. ANY REPRODUCTION IN PART OR AS A WHOLE WITHOUT THE WRITTEN PERMISSION OF APPLIED ENGINEERING IS PROHIBITED.
 60020



TITLE:
**Domestic Assembly
 6 Bolt**

SIZE	DWG. NO.	REV
A	60020	IR-3
MASS LB	SHEET 2 OF 2	