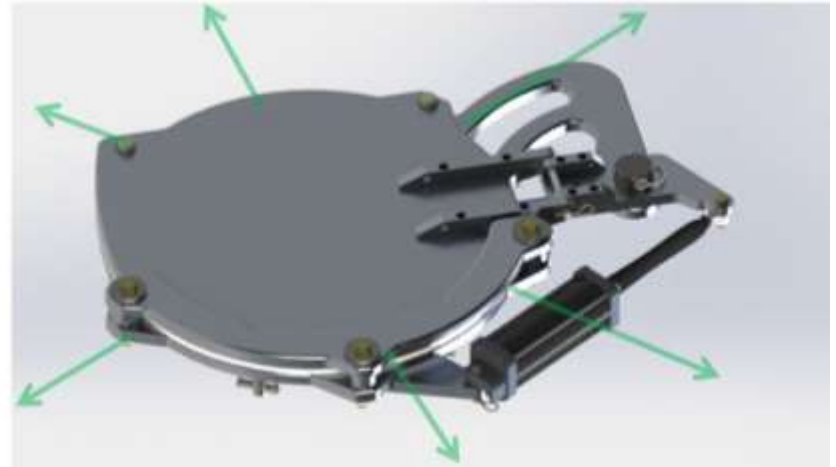




## AIR PURGE FLANGE CLEANING

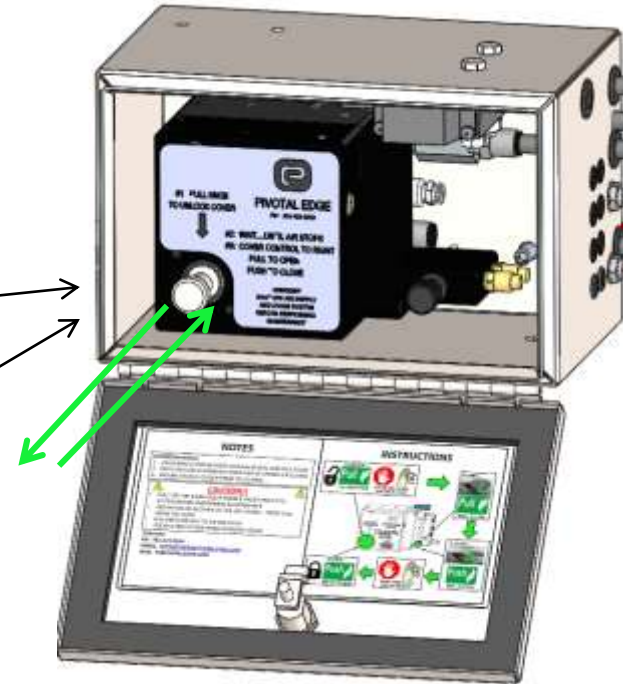
A FAST AND EASY WAY TO KEEP YOUR LID OPERATING WELL DAY IN AND OUT

**PERFORM EVERY TIME AFTER OFF LOADING!**



### INSTRUCTIONS:

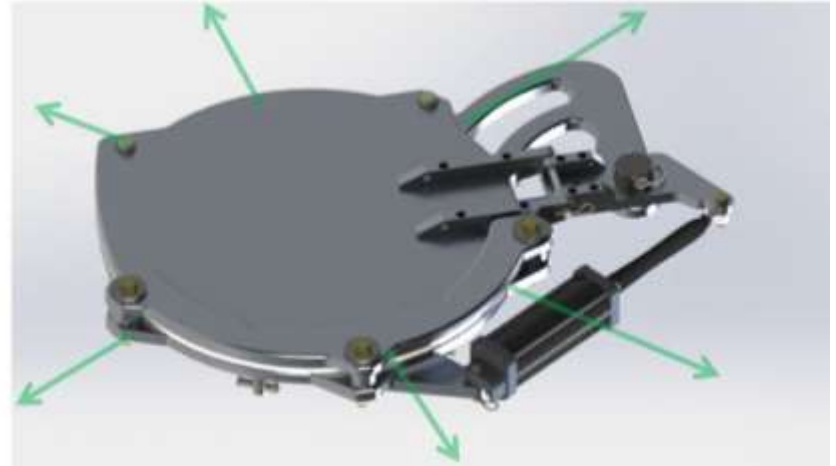
1. AFTER OFF LOADING IS COMPLETE
2. DECREASE TANK PRESSURE TO 0.5 - 1.0 BAR
3. PULL PIVOTAL EDGE CONTROL BOX KNOB TO DEFLATE SEAL
4. OPEN TRAILER SAFETY BLOW DOWN VALVE
5. RESEAL COVER BY PUSHING IN THE PIVOTAL EDGE CONTROL BOX KNOB



THESE STEPS WILL ALLOW THE PRESSURE TO PURGE BETWEEN THE COVER AND THE FLANGE CLEARING EXCESS MATERIAL FROM THE OPENING

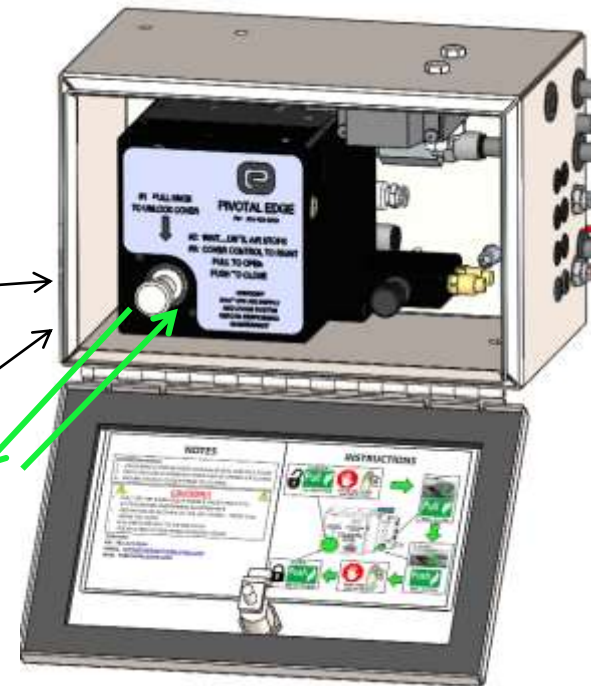
**TROUBLE SHOOTING TIP:**  
AIR OR DUST IS LEAKING THROUGH THE SEAL WHEN  
PRESSURIZING THE TANK WHILE OFF LOADING

## FOLLOW THE AIR PURGE PROCEDURE



### INSTRUCTIONS:

1. NOTE AIR OR DUST LEAKING
2. STOP PRESSURIZING THE TRUCK ONCE IT REACHES 0.7 TO 1 BAR
3. PULL PIVOTAL EDGE CONTROL BOX KNOB TO DEFLATE SEAL
4. AIR WILL BLOW THROUGH THE OPENING REMOVING DUST FROM THE FLANGE
5. RESEAL COVER BY PUSHING IN THE PIVOTAL EDGE CONTROL BOX KNOB



IF THIS DOES NOT WORK **REPEAT THE PROCEDURE UNTIL IT SEALS.**